

I.C. "CENA"

Erasmus + 2015/2016

LEZIONE GIMP 2.8 (Arte, Tecnologia, Geografia)

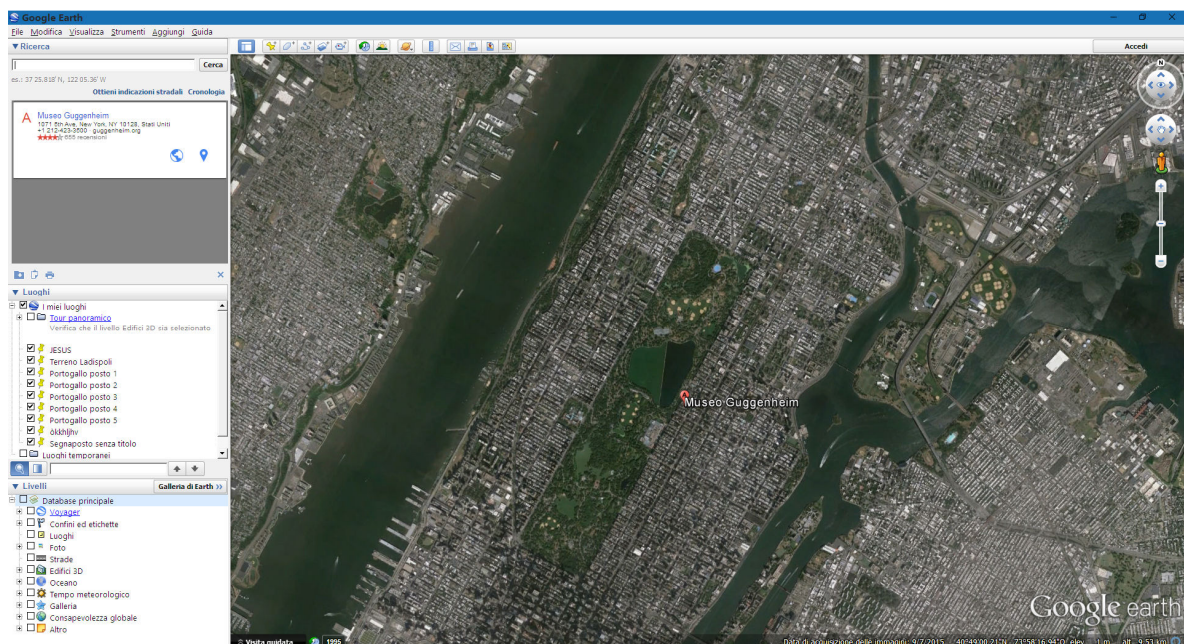
This lesson involves 3 different subjects which are Art, Geography and Information Tecnology.

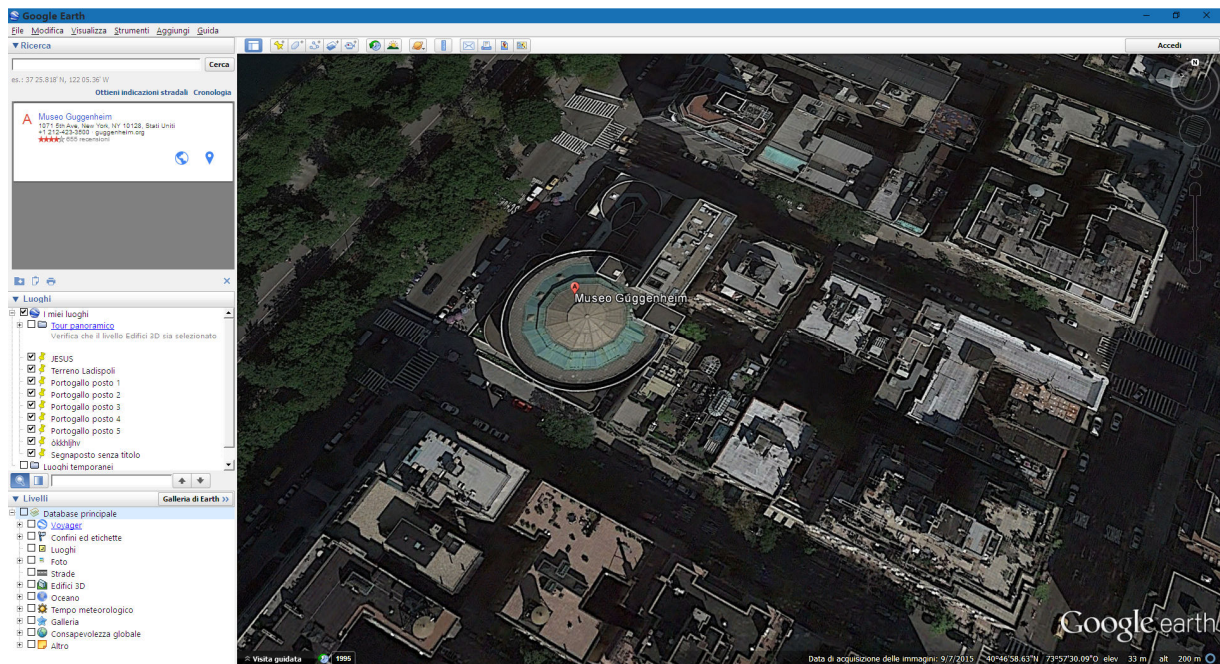
Starting from some information we are going to look for on the web relating the position of some specific sites in the world and connecting this research to other information concerning art treasures we are going to have an interactive lesson whose purpose is to show you how we can use our knowledge to realize and develop our digital competence using a computer programme.

In this easy guided lesson we are going to learn how to use simple buttons of the free GIMP 2.8 programme.

We're going to use the achieved knowledge learnt in Geography and Art to colour some white buildings we have previously found using the programme Google Earth.

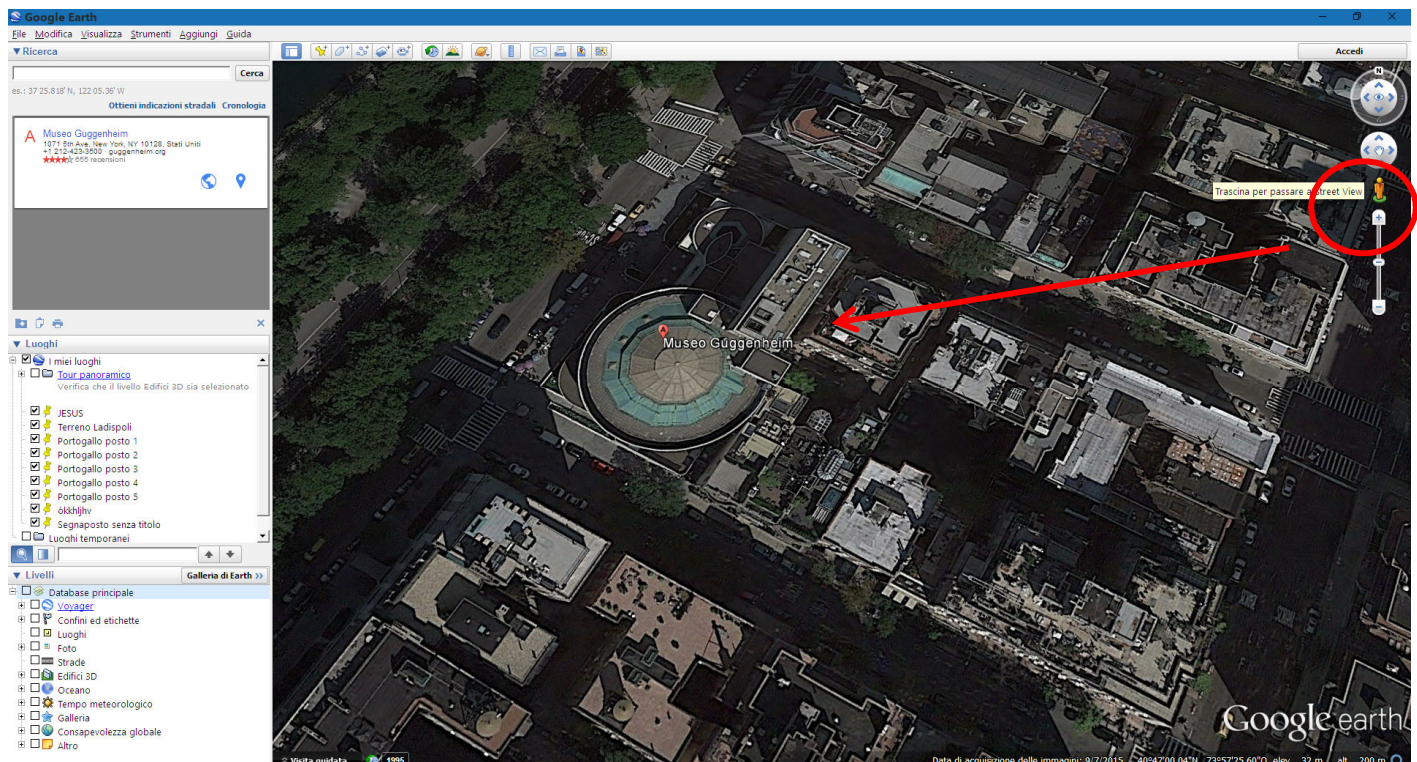
Let's find for example the Guggenheim Museum in New York



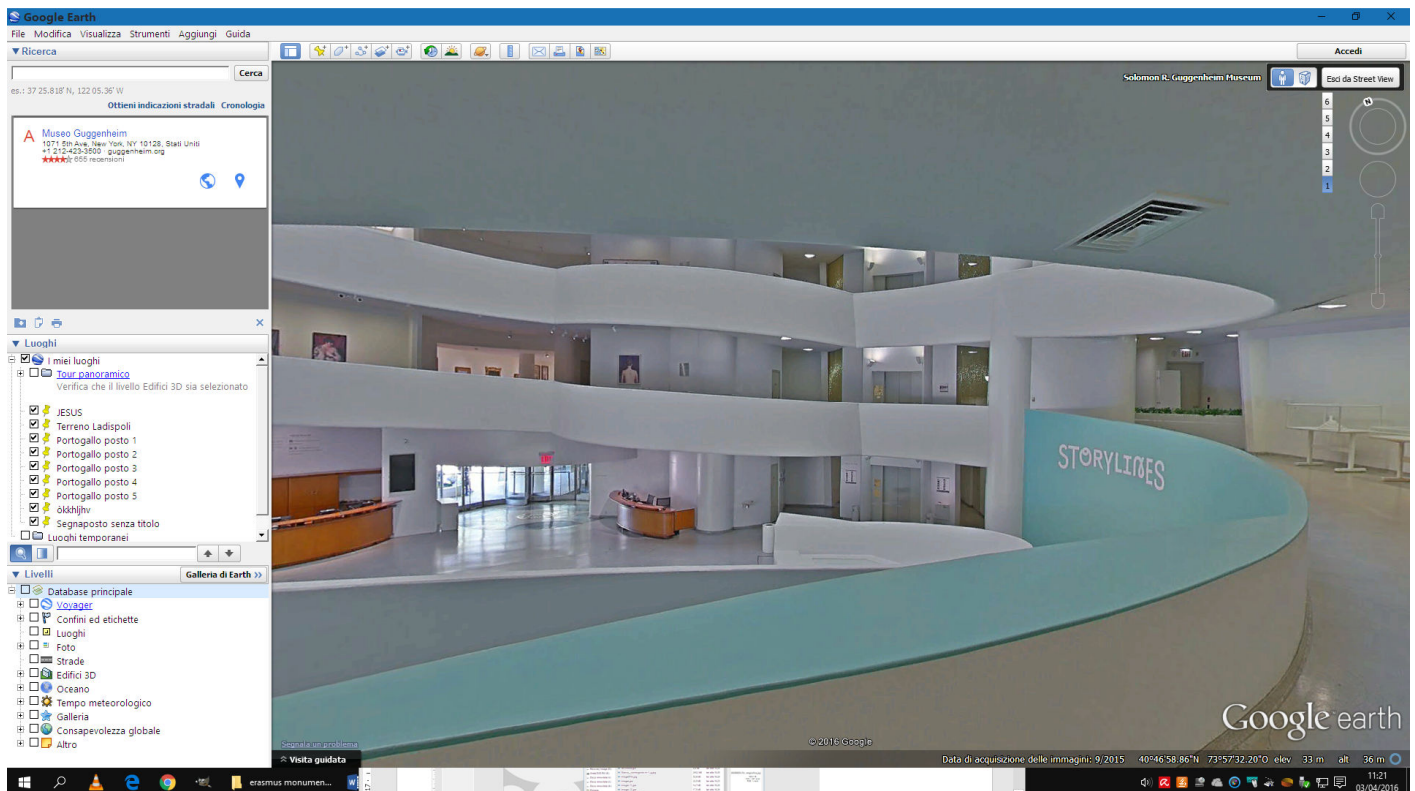


We enter the word Guggenheim and it doesn't matter if we don't spell the word exactly because the programme will suggest the right spelling. So it can be used even by students with learning disabilities without causing them any worry.

We've chosen the Guggenheim since recently we've been given by Google Earth the chance to enter the museum and visit its interior so once started the programme we pass to the Street View Mode to have a look inside.



HERE WE ARE.....



Here we can visit the art gallery ,appreciate paintings of the most important painters from the 20th century: Braque, Cezanne, Chagall, Degas ,Manet...and choose one of them to decorate the front of the museum. Its walls have to be white to better enjoy the final result.

THE MOST FAMOUS.....

Contadina seduta in un prato (1883) di Georges-Pierre Seurat



Il violinista verde, 1923 Marc Chagall

Jeanne Hébuterne in maglione giallo, 1919 Amedeo Modigliani

Moulin de la Galette, 1900 Pablo Picasso

Studio per Composizione II, 1910 Vasilij Kandinskij

Quadro con bordo bianco, 1913 Vasilij Kandinskij

Tratti neri, 1913 Vasilij Kandinskij

Ovale rosso, 1920 Vasilij Kandinskij

Composizione VIII, 1923 Vasilij Kandinskij

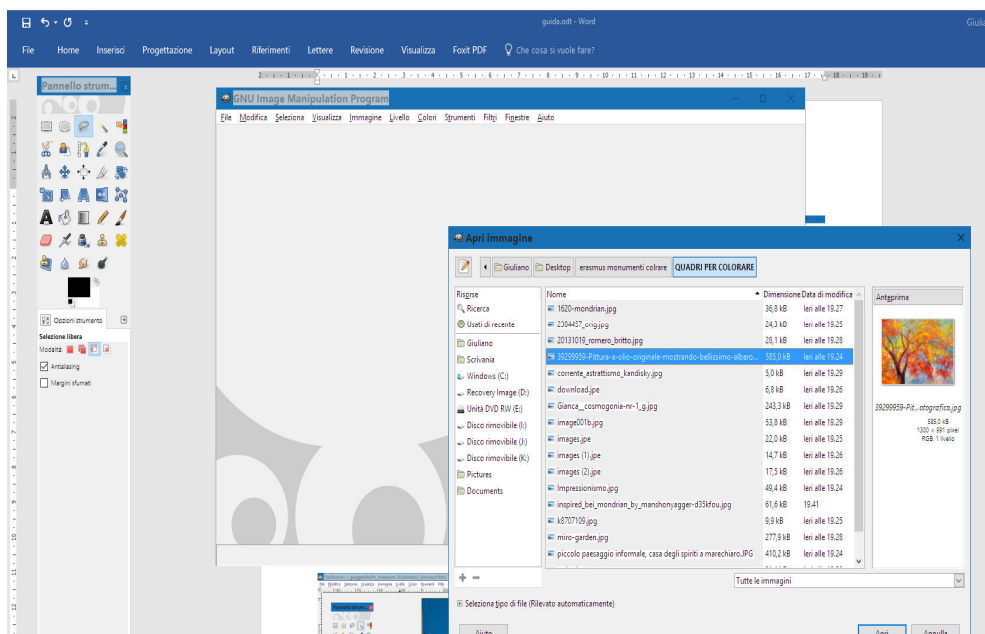
Alcuni cerchi, 1926 Vasilij Kandinskij

Piani, 1929 Vasilij Kandinskij

Dolce salita, 1934 Vasilij Kandinskij

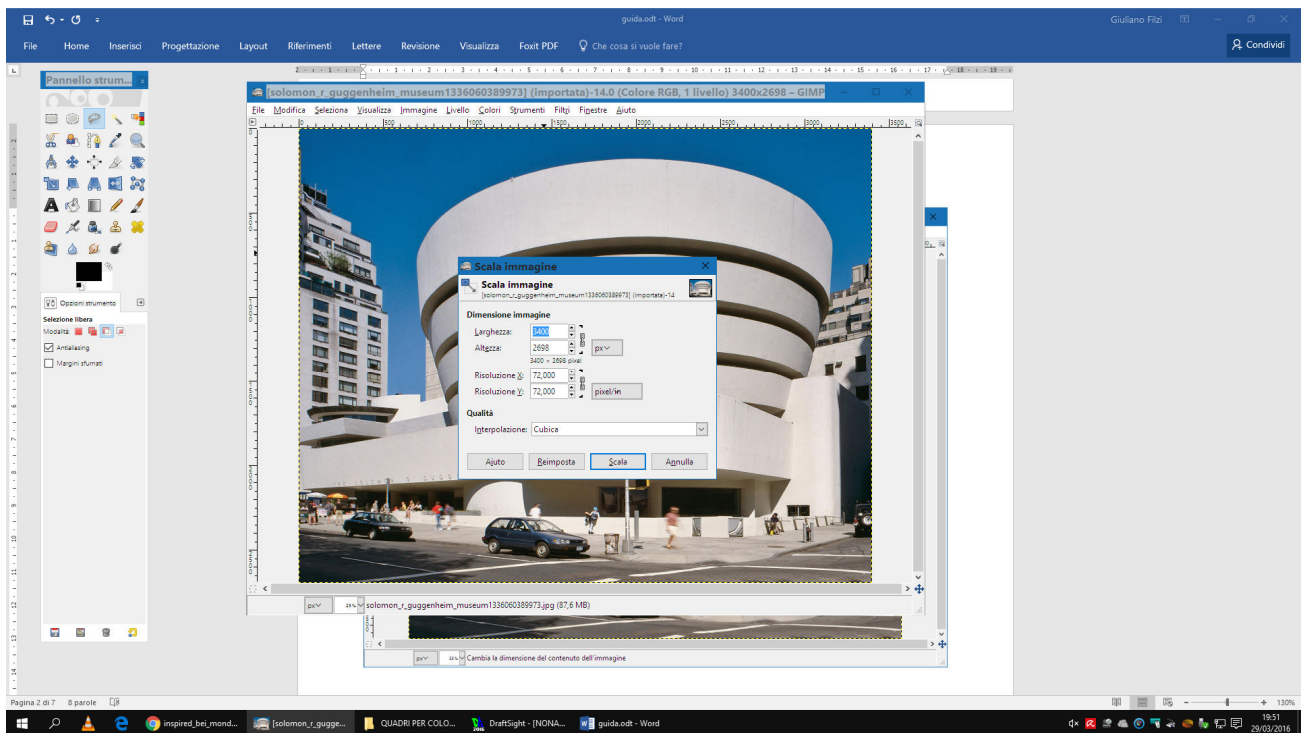
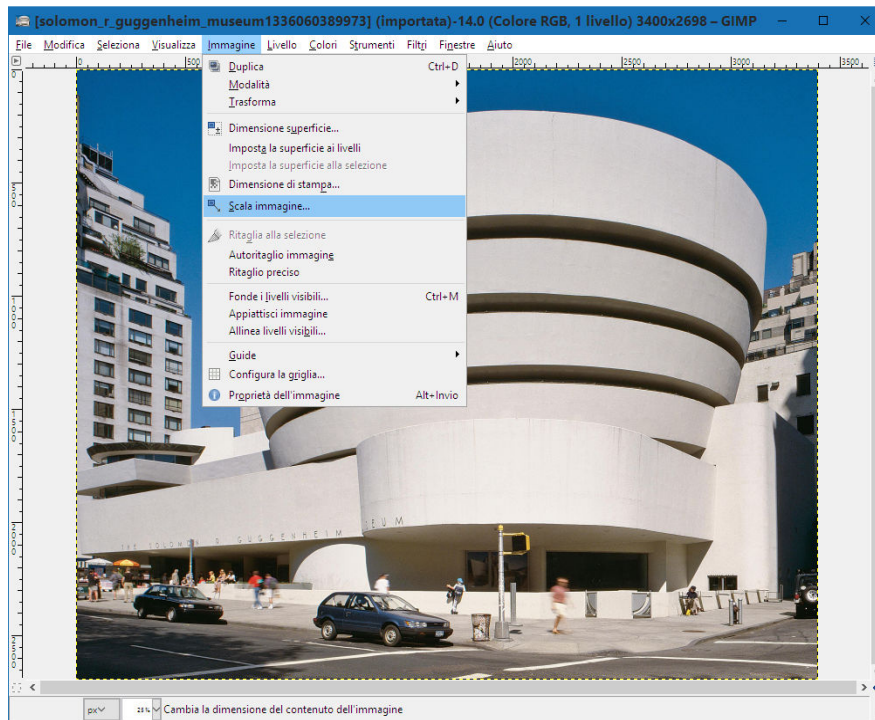
Senza titolo, 1941 Vasilij Kandinskij

Once started the GIMP 2.8 programme we click on the image of the monument we want to colour and the image of the painting we choose to colour it.

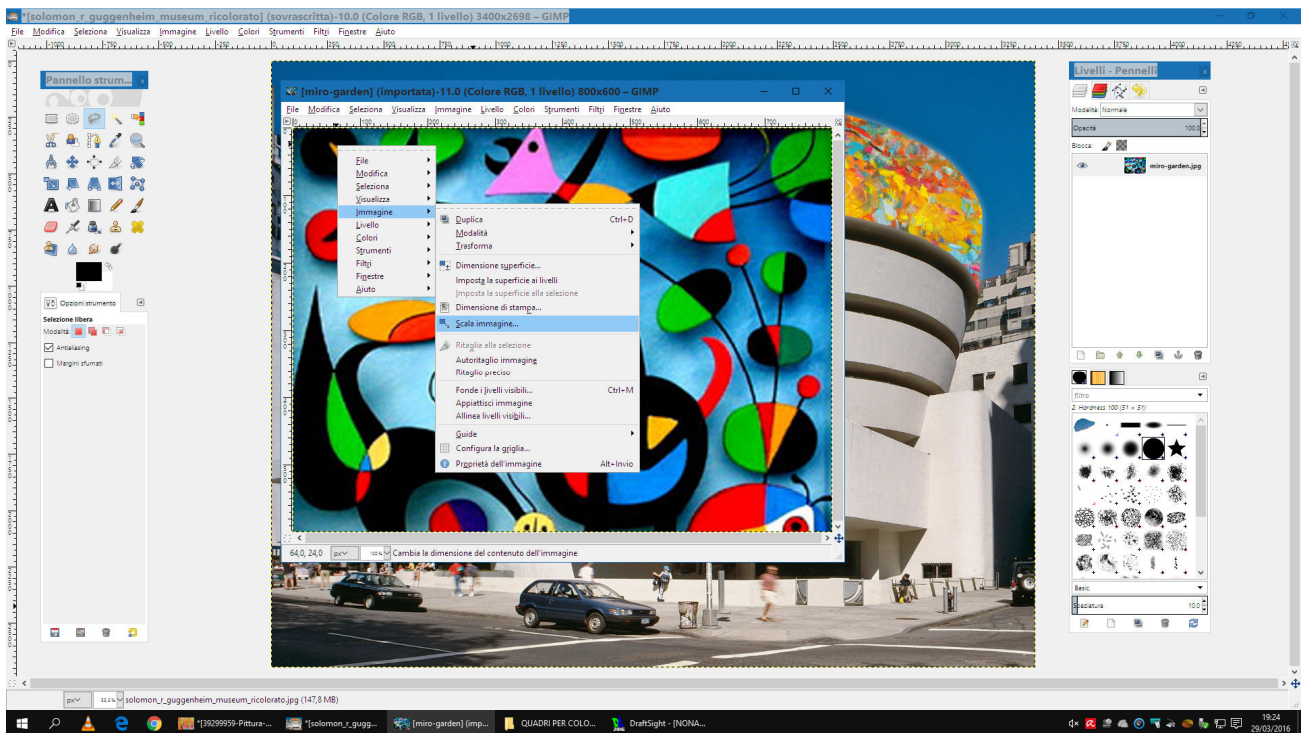


The images have to be scaled to have compatible measures, we should have a similar height and width.

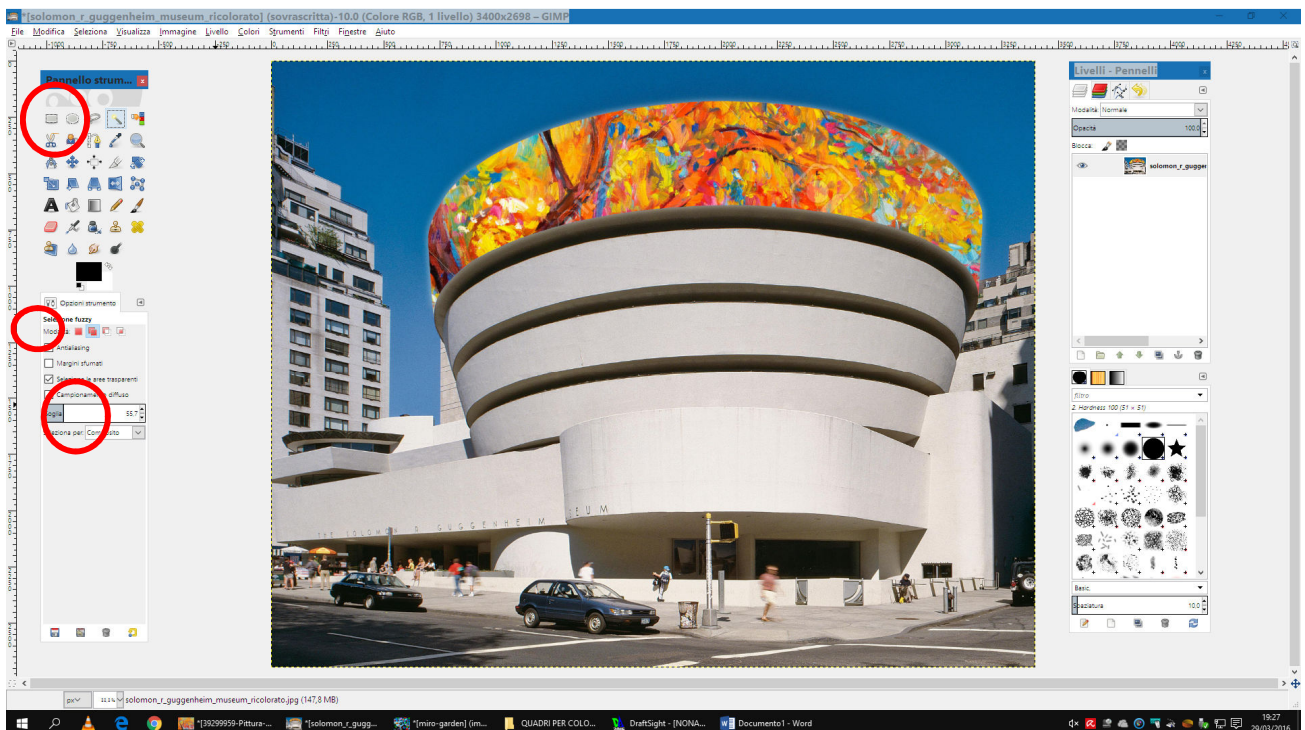
So we click on `scale image (scala immagine)`. We need a high definition image so we write 3400 in the width sector (this number depends on the dimension of the surface we want to paint, the larger it is the higher is the number).



After scaling the images we click on the section we want to colour then select all (seleziona tutto) and by pushing Ctrl and C we copy.

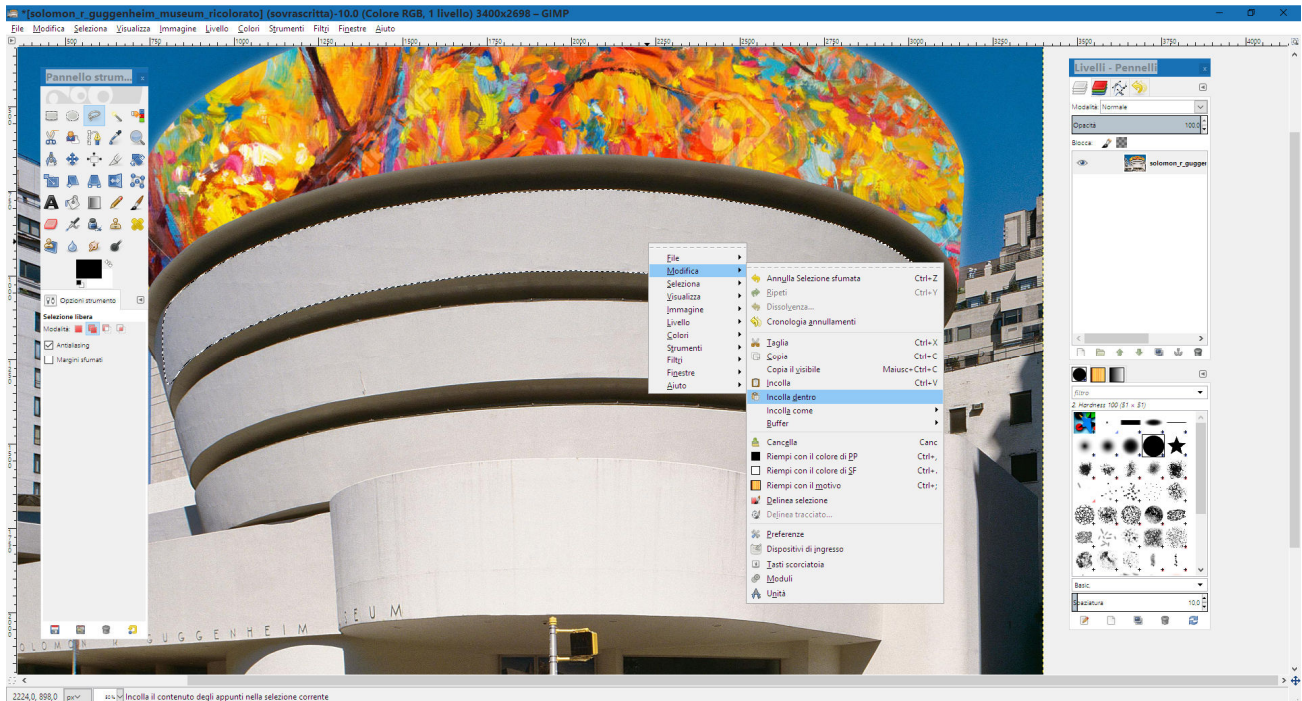


Then we pass once again on the image of the museum and pushing the fuzzy button, which looks like a flashlight, we select the area we are going to colour.

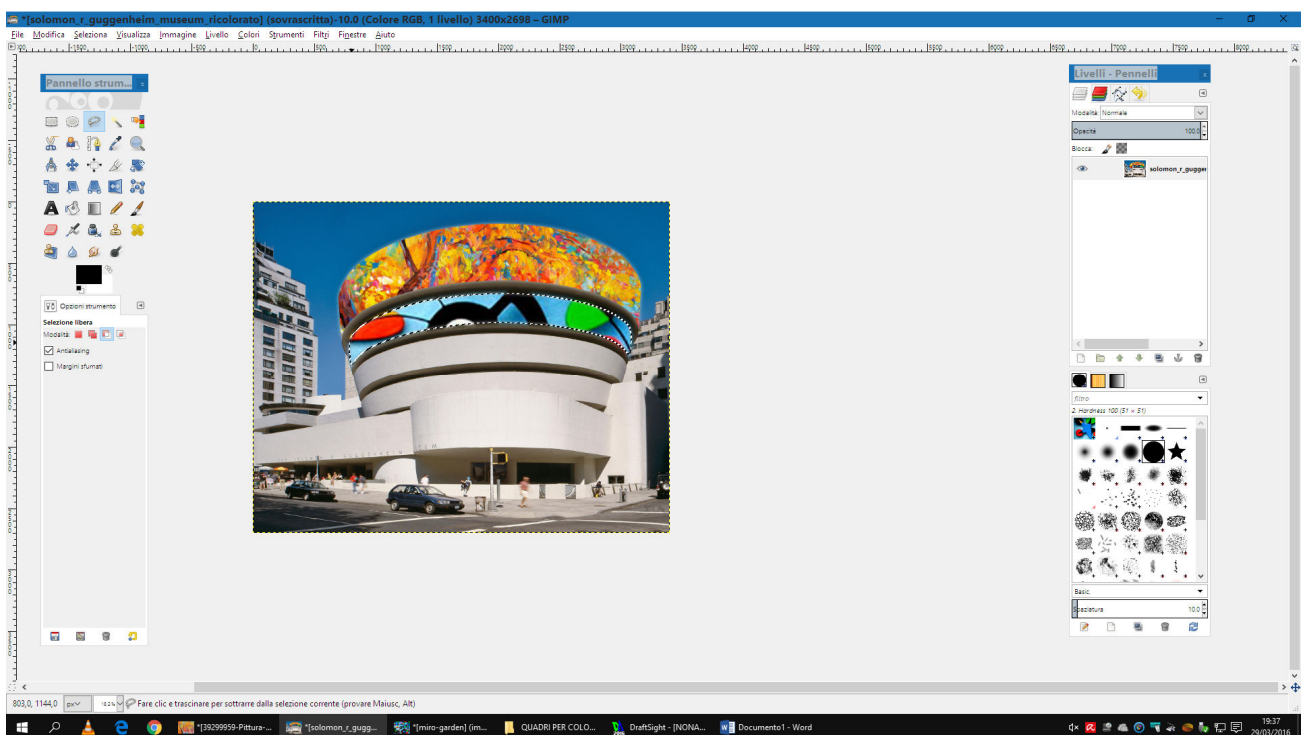


To select the area we are interested in we operate on the level of the fuzzy button, by increasing it we'll have a larger area to work on.

To paste we click modify (modifica) and then paste inside(incolla dentro)...

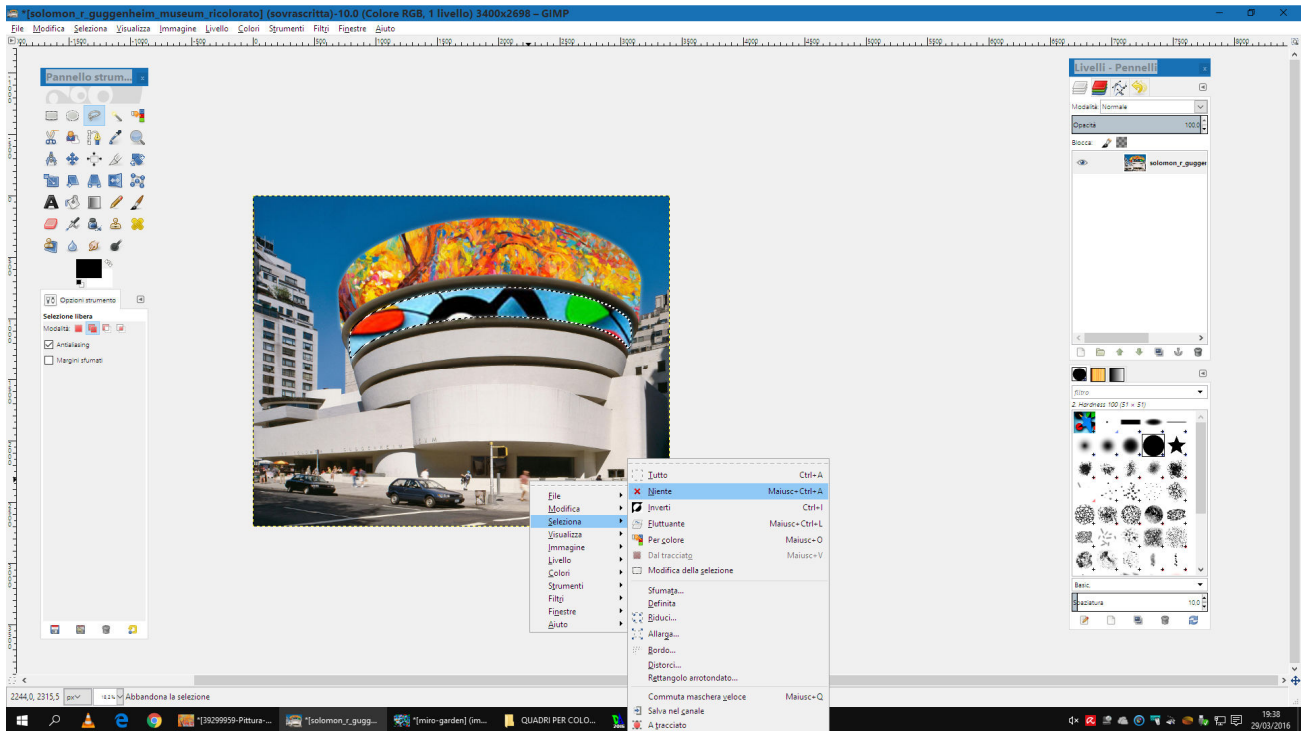


The floor of the museum will be finally coloured.

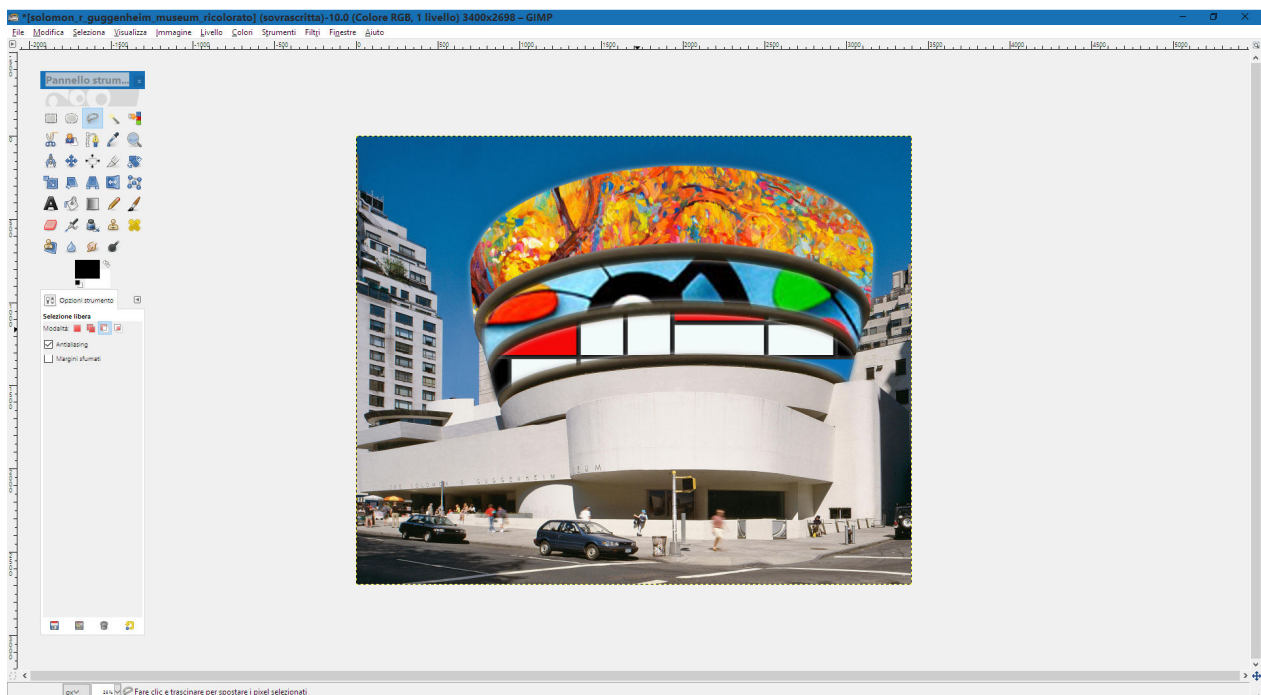


To fix the colour we click outside the dotted area ,then click on select(seleziona) and then on nothing (niente)...

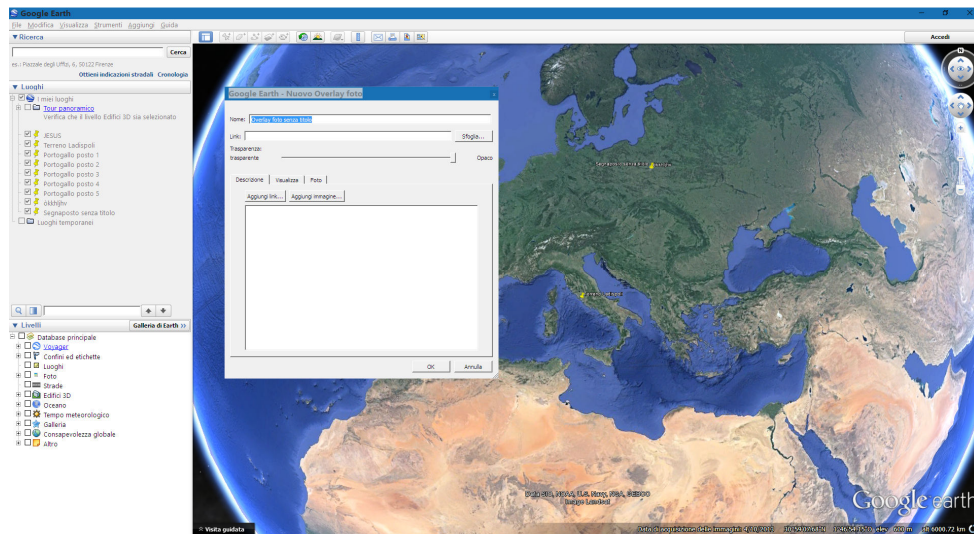
Following the same instruction we carry on to colour a new area.



And that's what we'll have at the end...



If we want we can upload the photo of our colourful product on google earth with a comment and wait a couples of days to let google to check that our picture doesn't harm anyone



Good Work!!!!